

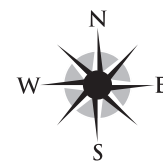
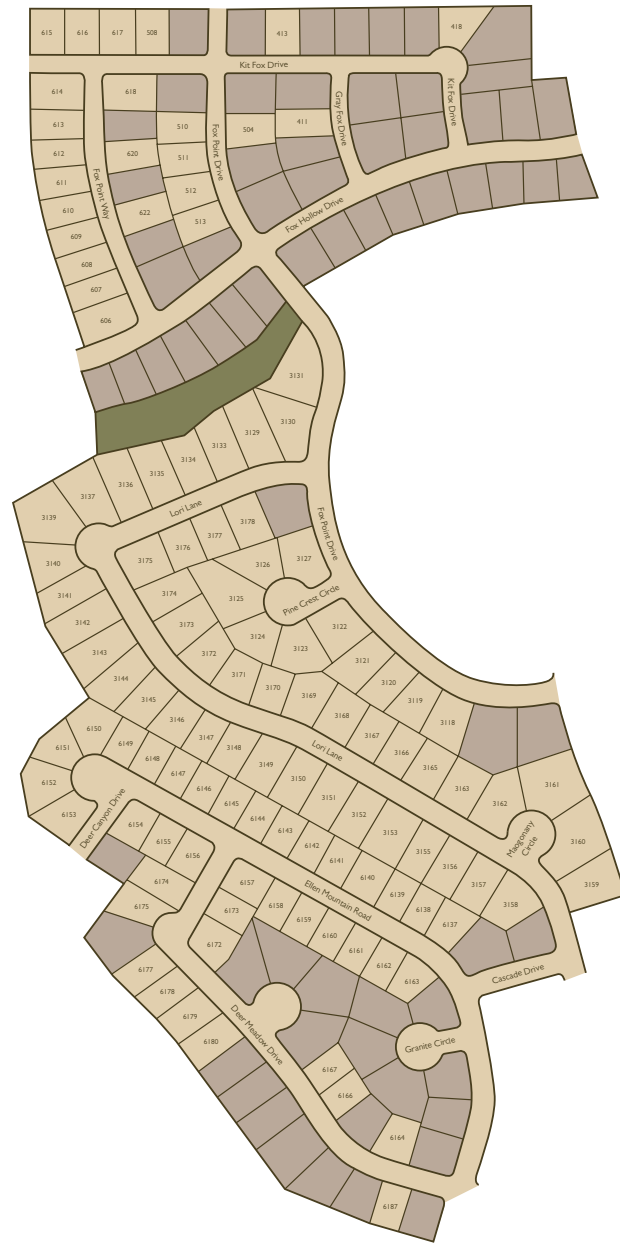
Fox Hollow
BRYCE

Approx. square feet: 1,650
Stories: 1
Bedrooms: 3 - 5

Garage: 2- to 4-car
Plan Number: U168

Fox Hollow
BRYCE

Sitemap



Map not drawn to scale.

 RICHMOND AMERICAN HOMESITES

COMMUNITY LOCATION
3017 South Fox Point Drive
Saratoga Springs, UT 84045
801-768-9622

HOME GALLERY
849 West Levoy Drive, Suite 108
Salt Lake City, UT 84123
801-545-3435



Elevation A

Available elevations:



Elevation A



Elevation B



Elevation C



Elevation D



Elevation E



Elevation F

Approx. square feet: 1,650
Stories: 1
Bedrooms: 3 - 5
Garage: 2- to 4-car
Plan Number: U168

The ranch-style Bryce plan offers a distinct separation between living and entertaining spaces. One side of the home features three large bedrooms, including a lavish master suite with an optional deluxe bath. The other has a large family room with an optional fireplace and a charming kitchen with an island and optional gourmet features.

COMMUNITY LOCATION
3017 South Fox Point Drive
Saratoga Springs, UT 84045
801-768-9622

HOME GALLERY
849 West Levoy Drive, Suite 108
Salt Lake City, UT 84123
801-545-3435

Fox Hollow
BRYCE

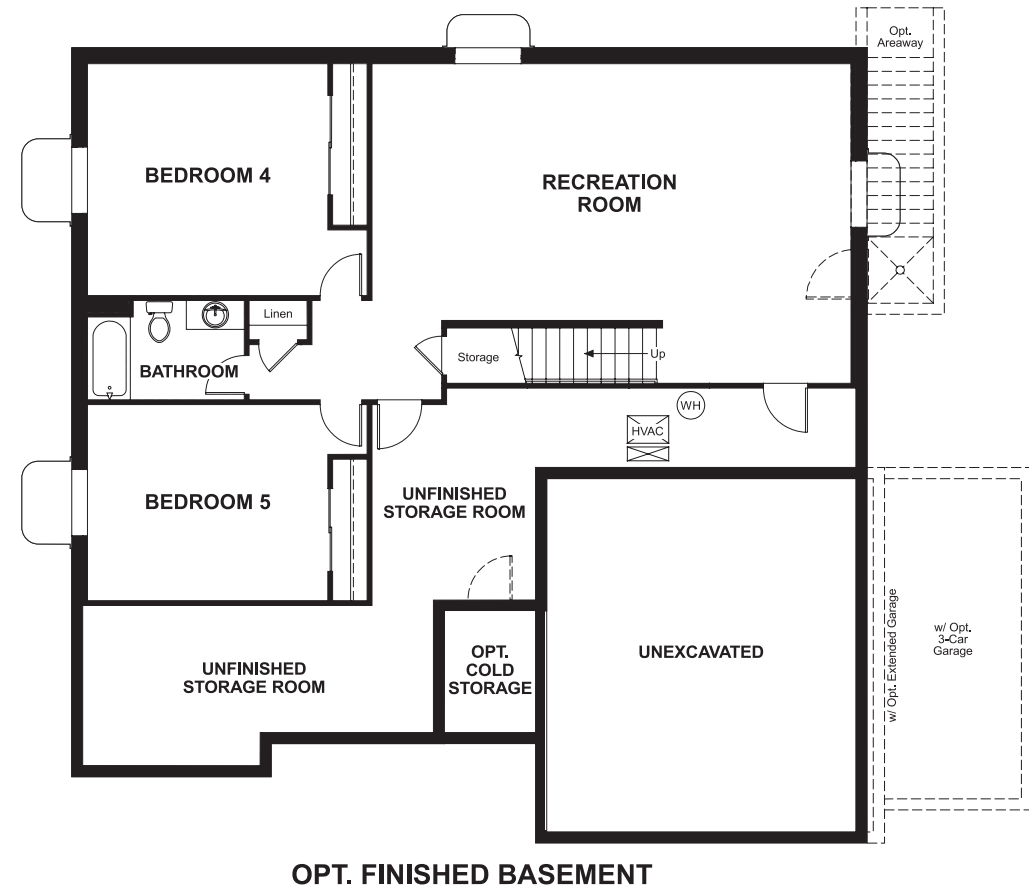
Approx. square feet: 1,650
Stories: 1
Bedrooms: 3 - 5

Garage: 2- to 4-car
Plan Number: U168

Floor Plan
Main Floor



Floor Plan
Basement



THIS PLAN'S PROJECTED HERS® INDEX = 64*
Projected Rating Based on Plans – Field Confirmation Required

How does this floor plan rate?
Take a look: **100** = Standard new home* **130** = Typical resale home**
The lower the number, the better! Refer to the RESNET® HERS index brochure or go to www.RESNET.us for details.

What's a HERS® Index? HERS stands for Home Energy Rating System, a system created by RESNET® to measure home energy efficiency.[^]
A Projected HERS index or rating is a computer simulation performed prior to construction by a third-party HERS rater using RESNET-accredited rating software, rated feature and specification data derived from home plans, features and specifications, and other data selected or assumed by the rater. The projected HERS index is approximate and is subject to change without notice. Actual results will vary.

*This information is presented for education purposes only. The HERS index for a confirmed rating will be determined by a third-party HERS rater based on data gathered from on-site observations and, if required, testing of rated features for a home as featured, optioned, located, oriented and/or built.
+Standard new home is based on the RESNET® Reference Home definition with a HERS® index of 100 (based on the 2006 International Energy Conservation Code).
++Typical resale home is based on the U.S. Department of Energy definition with a HERS® index of 130.

[^]RESNET® has developed the HERS® index to indicate the comparative efficiencies of homes. It is no guarantee that energy efficiencies will be achieved.